

2. In the adjacent weather map:

- A warm front is positioned between numbers \_\_\_\_\_ and \_\_\_\_\_.
- A cold front is positioned between numbers \_\_\_\_\_ and \_\_\_\_\_.

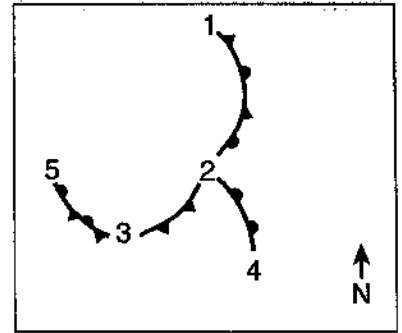


Figure 2

### Additional Readings

- “From Gods to Satellites” by John Farrand, Jr., *Weatherwise*, Vol. 44, No. 2 (April 1991), p. 30.
- “To Understand the Atmosphere” by Henry Lansford, *Weatherwise*, Vol. 38, No. 4 (August 1985), p. 184.
- “Weather, Climate and You” by H. E. Landsberg, *Weatherwise*, Vol. 39, No. 5 (October 1986), p. 248.
- “Weather, Climate and the Economy” by Patrick Hughes, *Weatherwise*, Vol. 35, No. 2 (April 1982), p. 60.
- “Saturn: Weather Under the Rings” by Alan Dyer, *Weatherwise*, Vol. 44, No. 3 (June 1991), p. 19.
- “The Climate of Mars” by Robert M. Haberle, *Scientific American*, Vol. 254, No. 5 (May 1986), p. 54.
- “How Climate Evolved on the Terrestrial Planets” by James F. Kasting, Owen B. Toon, and James B. Pollack, *Scientific American*, Vol. 254, No. 5 (May 1986), p. 54.
- “Venus: Weather like Hell” by Alan Dyer, *Weatherwise*, Vol. 44, No. 2 (April 1991), p. 10.
- “Uranus and Neptune: Weather at the Outer Limits” by Alan Dyer, *Weatherwise*, Vol. 45, No. 3 (June–July 1992), p. 27.
- “The Coldest Places in the Solar System” by Alan Dyer, *Weatherwise*, Vol. 45, No. 4 (Aug.–Sept. 1992), p. 30.
- “An Age of Discovery,” *Weatherwise*, Vol. 48, No. 3 (June/July 1995), p. 42.
- “Wearing Thin” by Scott Fields and Ruth Flanagan, *Earth*, Vol. 3, No. 2 (March 1994), p. 20.
- “The Great Leap Forward” by Patrick Hughes, *Weatherwise*, Vol. 47, No. 5 (October/November 1994), p. 22.