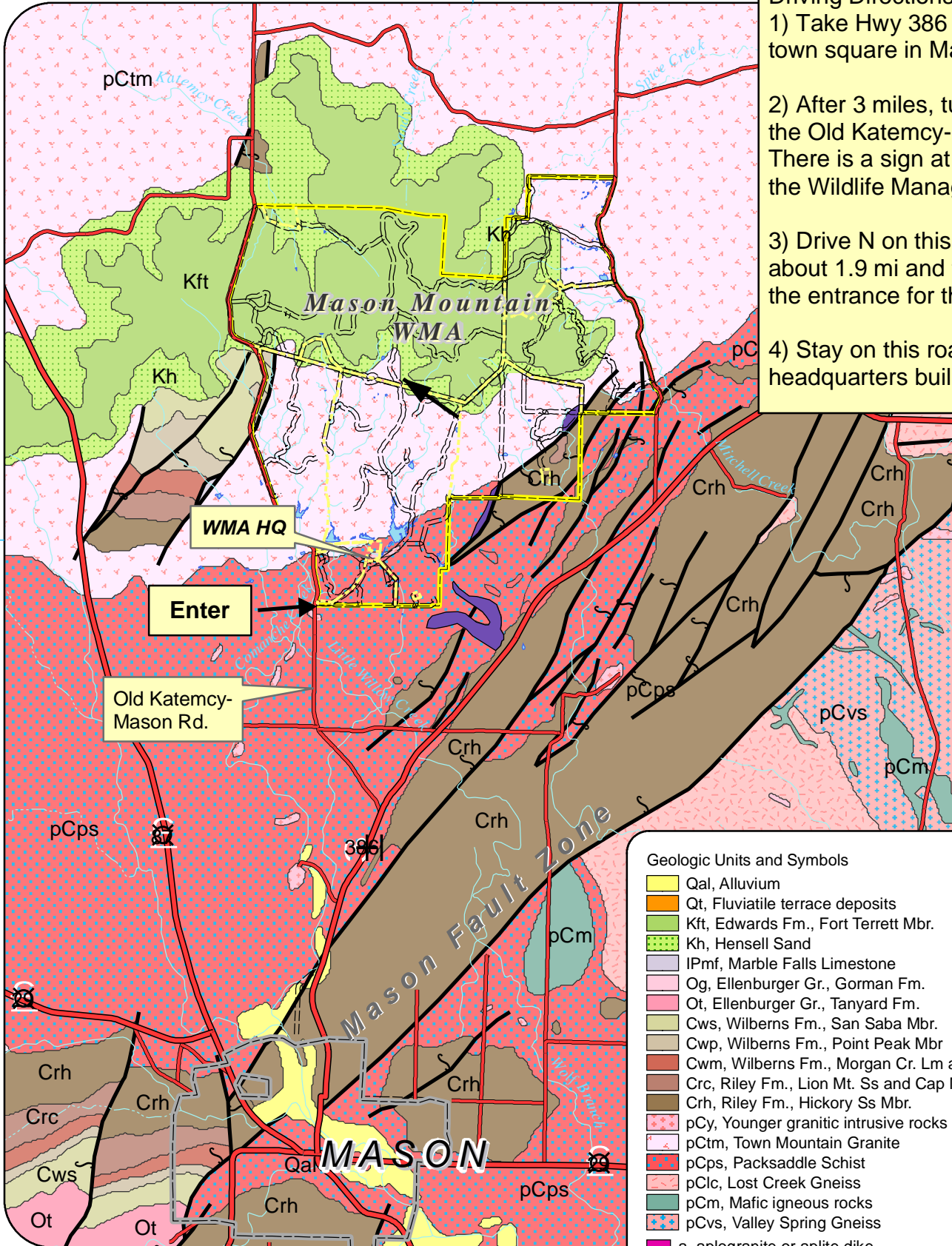


Geologic Map of Region North of Mason, Texas

480000

Driving Directions:

- 1) Take Hwy 386 north from the town square in Mason.
- 2) After 3 miles, turn NW onto the Old Katemcy-Mason Rd. There is a sign at the turn for the Wildlife Management Area.
- 3) Drive N on this gravel road about 1.9 mi and turn right into the entrance for the WMA.
- 4) Stay on this road to the headquarters buildings.



3410000

Geologic Units and Symbols

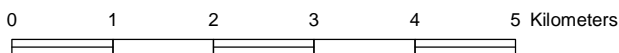
- Qal, Alluvium
- Qt, Fluvialite terrace deposits
- Kft, Edwards Fm., Fort Terrett Mbr.
- Kh, Hensell Sand
- IPmf, Marble Falls Limestone
- Og, Ellenburger Gr., Gorman Fm.
- Ot, Ellenburger Gr., Tanyard Fm.
- Cws, Wilberns Fm., San Saba Mbr.
- Cwp, Wilberns Fm., Point Peak Mbr
- Cwm, Wilberns Fm., Morgan Cr. Lm and Welge Ss
- Crc, Riley Fm., Lion Mt. Ss and Cap Mt. Lm Mbrs.
- Crh, Riley Fm., Hickory Ss Mbr.
- pCy, Younger granitic intrusive rocks
- pCtm, Town Mountain Granite
- pCps, Packsaddle Schist
- pClc, Lost Creek Gneiss
- pCm, Mafic igneous rocks
- pCvs, Valley Spring Gneiss
- a, aplogranite or aplite dike
- m, Packsaddle Schist, marble

Fault Type

- Normal
- Unspecified

0

NAD83, UTM zone 14 projection
Geology from the GAT, Llano Sheet



1:75,000

M.Helper, Sept. '06