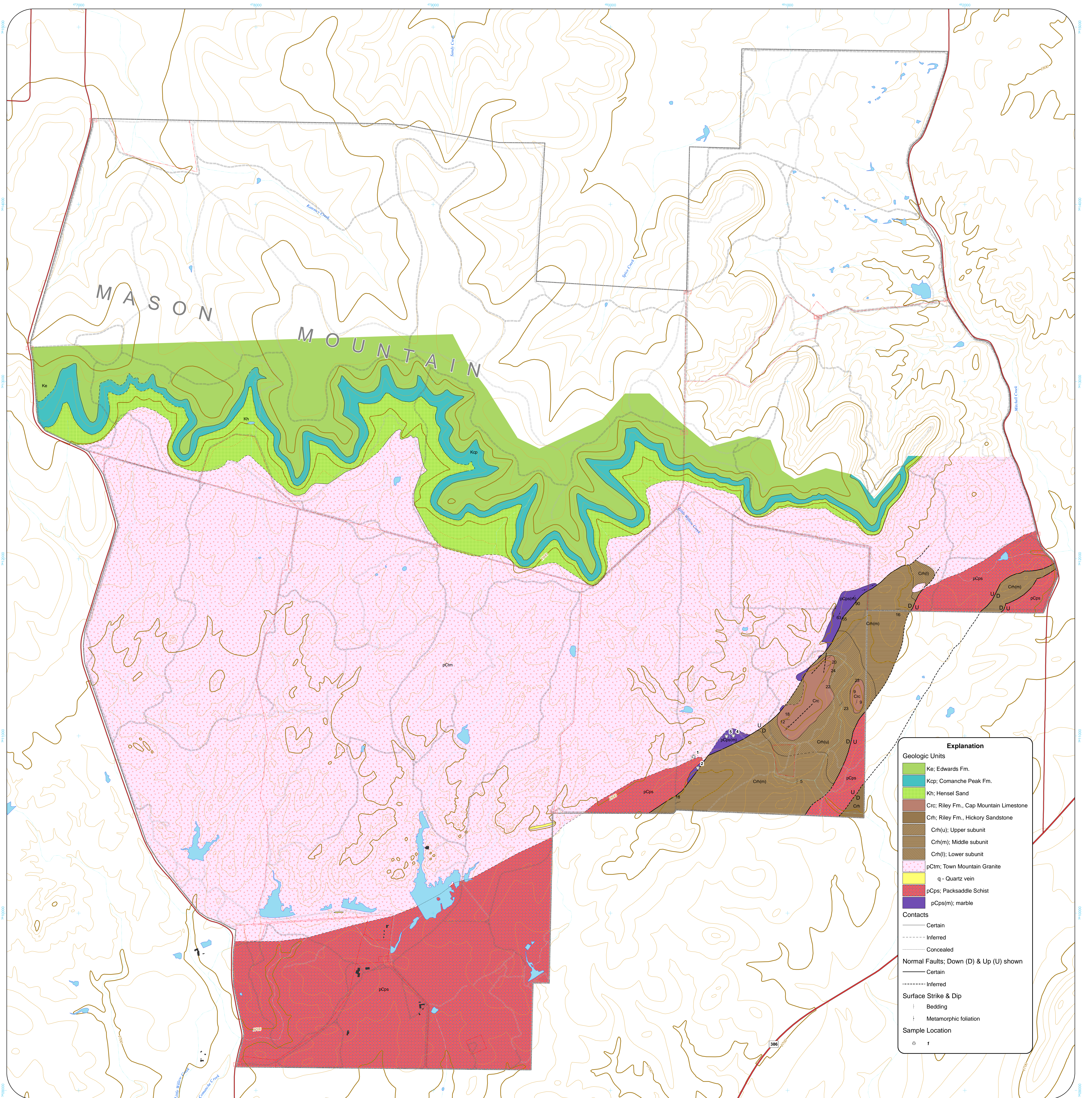


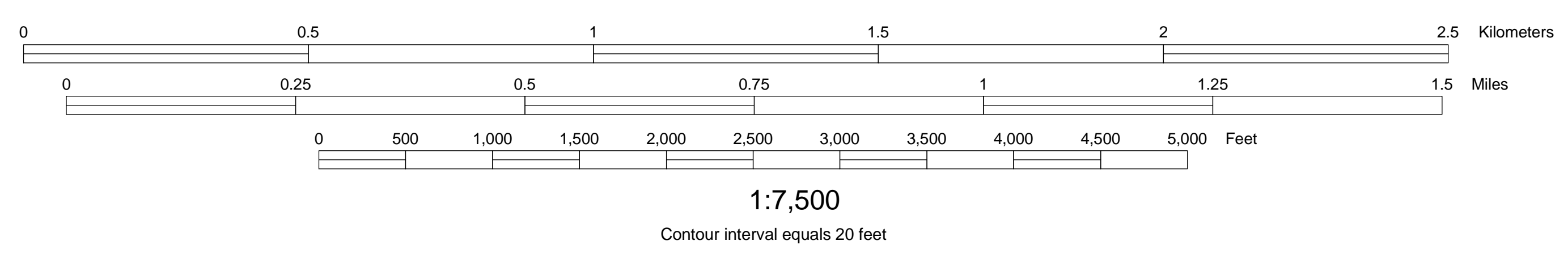
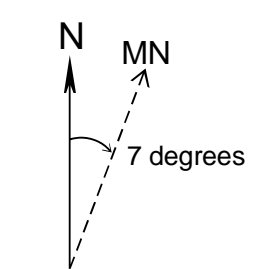
Geologic Map of a Part of the Mason Mountain Wildlife Management Area, Mason County, Texas

by
David F. Kilventon
Department of Geological Sciences, University of Texas at Austin, May, 2006



Explanation	
Geologic Units	
	Ke; Edwards Fm.
	Kcp; Comanche Peak Fm.
	Kh; Hensel Sand
	Crc; Riley Fm., Cap Mountain Limestone
	Ch; Riley Fm., Hickory Sandstone
	Ch(u); Upper subunit
	Ch(m); Middle subunit
	Ch(l); Lower subunit
	pCm; Town Mountain Granite
	q - Quartz vein
	pCps; Packsaddle Schist
	pCps(m); marble
Contacts	
	Certain
	Inferred
	Concealed
Normal Faults: Down (D) & Up (U) shown	
	Certain
	Inferred
Surface Strike & Dip	
	Bedding
	Metamorphic foliation
Sample Location	
	1

NAD83, UTM zone 14 projection
Base contours from USGS 7.5' Purdy Hill Quadrangle, from T.N.R.I.S.
Other GIS layers courtesy of T.P.W.D. or created by M. Helper
Geologic mapping by D. Kilventon under supervision of M. Helper, Spring, 2006



- Lake or pond
- Building
- Paved Rural Highway
- All Weather County Roads
- WMA Boundary
- High Fence
- Gate
- Ephemeral Creek
- Gravel/Dirt Road - open
- Gravel/Dirt Road - closed

