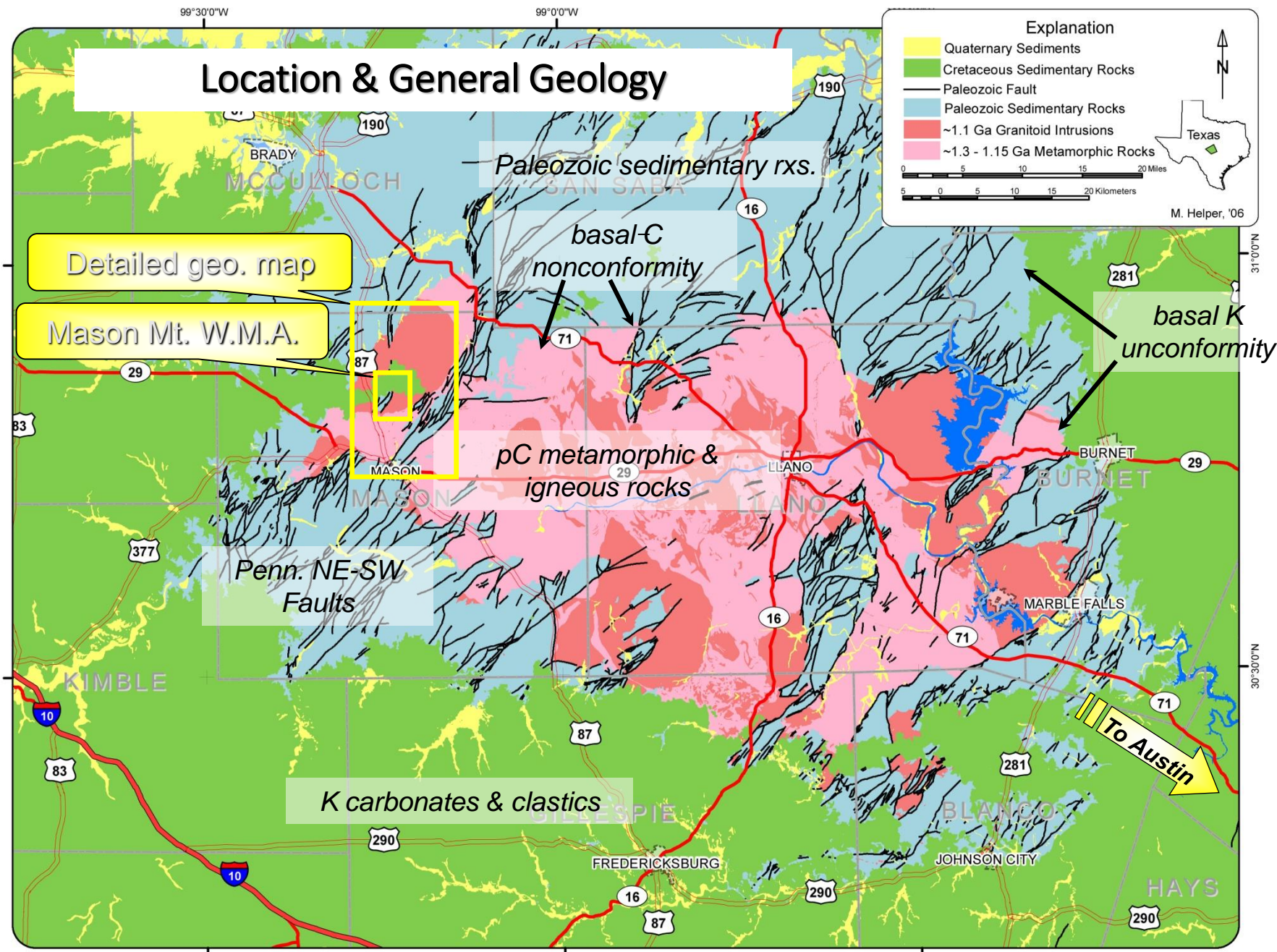


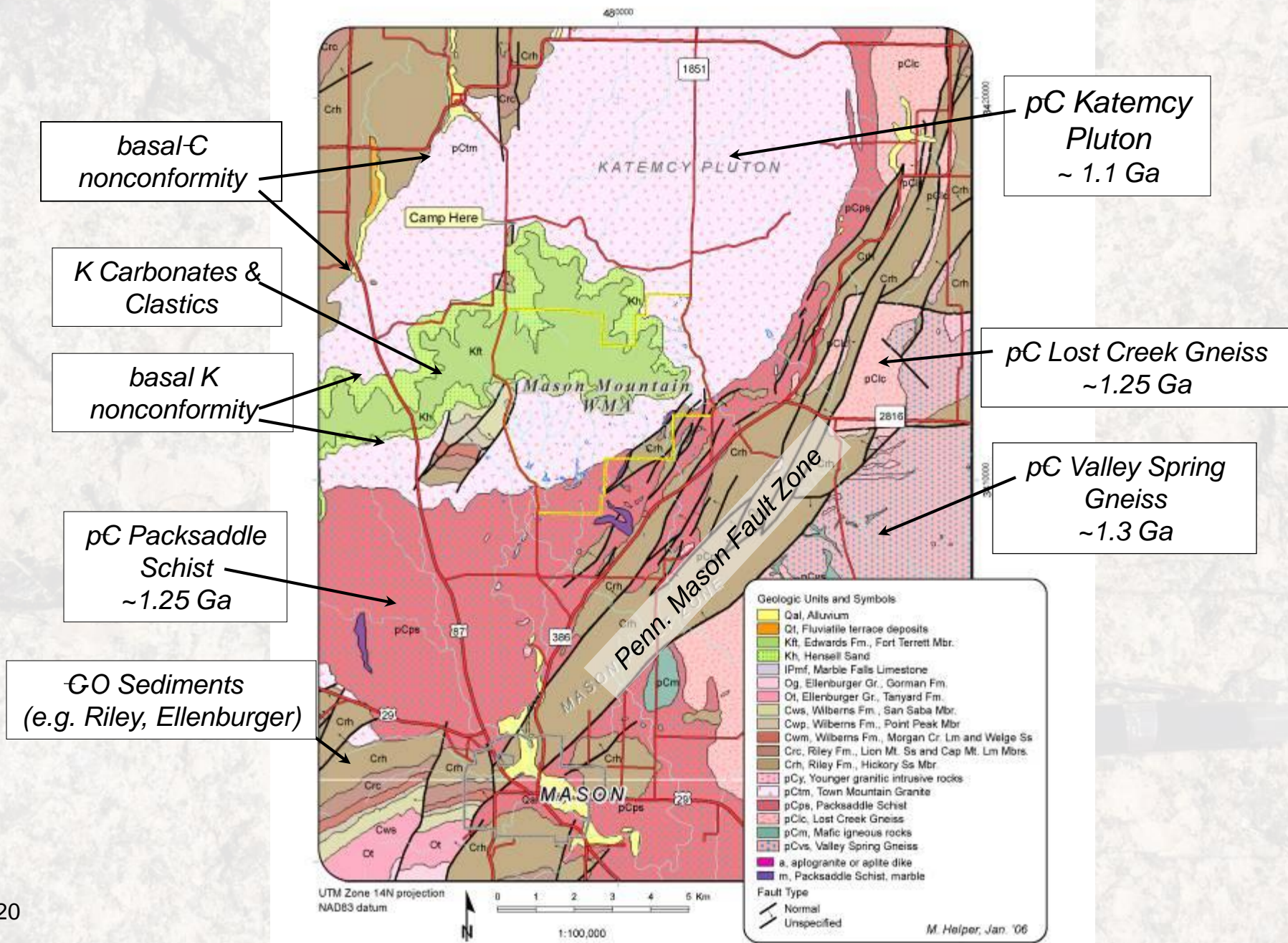
MMWMA Field Trip, Fall 2020

Geo327G/386G





1:100k ("Detailed") Geology, Mason Area



Your weekend mapping goals:

- Use the Collector App and/or Avenza Maps App
 - Collect the location of granite outcrops
 - Collect the orientation of joints, dikes and other features within granite



Logistics:

- Departure is 7:00 AM from JGB East basement door.
- We will be camping the evening of the 24th near the WMA headquarters. Bathrooms with running water and flush toilets are within walking distance.
- I will provide dinner Saturday and breakfast Sunday; you will need to bring lunches for both days.
- We will be back in Austin by 4 PM Sunday.

Bring With You:

- Fully charged iPad with your map and layers loaded, charger, cable, stylus
- Other field gear:
 - Daypack, note book, pencil/pen, water, hat, raincoat, boot or sturdy shoes
- Personal gear:
 - Sleeping bag/blanket, sleeping pad, flashlight, +/- tent, pillow, toiletries
 - Gear can be rented from REI or [UT Rec. Sports](#) (open Mon. and Fri. only, 12-6 pm!)
- Food:
 - Two lunches; Sunday lunch can be stored in a cooler

Not Permitted:

- Alcohol, fire arms

Health and Safety

- Must not have engaged in risky behavior (e.g. parties with unmasked people) during the last week;
- Must complete a Proactive Community Test this week;
- No more than 3 students per vehicle, one per row, staggered seating;
- HVAC in vehicle never in recirculate mode; windows down when driving slowly;
- Masks at all times in a vehicles; elsewhere at all times unless truly not approaching others within 6-10';
- Use hand sanitizer and other products liberally; wipe down high-contact vehicle surfaces with available wipes or cleaning product;
- Obey specified gas station protocols (TBA); stay in vehicles unless absolutely necessary to do otherwise.